



GE 230/208 Volt Built-In Heat and Cool Unit



- ◆ 11,600/11,400 BTU
- ◆ 11,600/9480 BTU heat
- ◆ 3680/3020 Watts heat
- ◆ 9.5/9.5 EER
- ◆ 230/208 Volts
- ◆ Mechanical Controls
- ◆ Variable Position Thermostat
- ◆ 4-Way Air Direction
- ◆ Up-front Washable Air Filter
- ◆ 2 Cool/2 Heat/2 Fan Only Speeds
- ◆ Cameo White

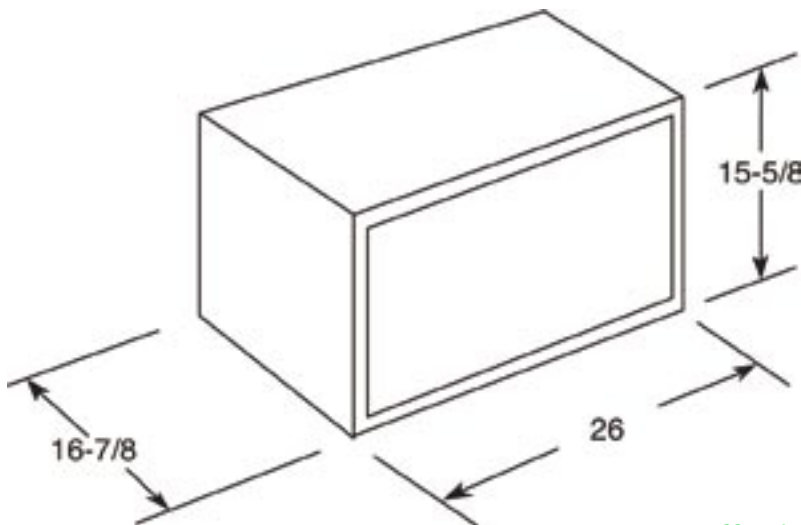
Wall Case Dimensions

Height: 15-5/8"
Width 26"
Depth: 16-7/8"

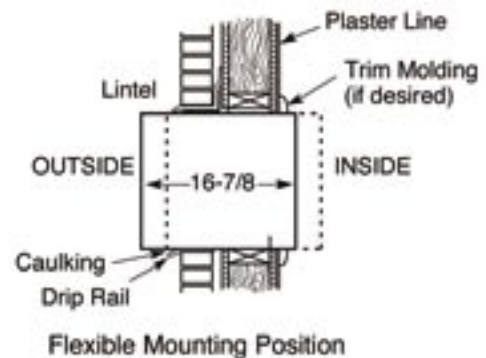
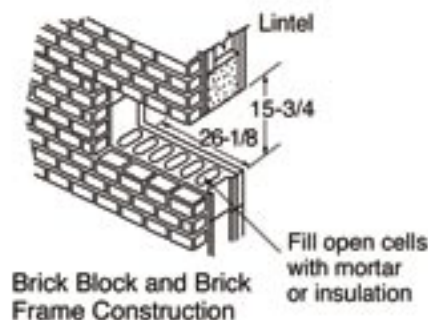
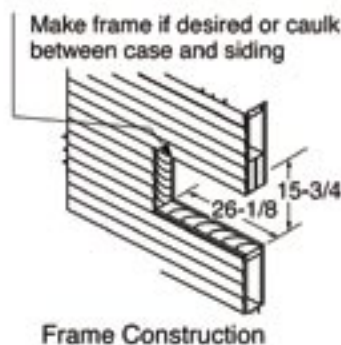
143200 Heat/Cool Unit

143201 Sleeve

NEW!



Installation



HOTPOINT Refrigerators

New, Improved Models:

All refrigerators now have more efficient compressors & fan motors, plus new insulation to meet current codes!



HOTPOINT

15.7 Cubic Foot Frost-Free Recessed Handles

- ◆ Icemaker Ready
- ◆ Full-Width Vegetable/Fruit Bin
- ◆ Two Covered Dairy Compartments
- ◆ NeverClean™ Condensor
- ◆ Two Full-Width Fresh Food Door Shelves
- ◆ Two Freezer Door Shelves
- ◆ Adjustable Wire Everwhite Shelves
- ◆ Color-Matched, Recessed Handles
- ◆ Reversible Doors

143068 Bisque

143069 White

With Ice Maker Installed:

143076 White*

*This model comes with standard handles

Dimensions

Height: 61-3/4"

Width: 28"

Depth including handle: 29-1/8"

Depth with door open 90°: 54-7/8"

Weight: approx. 166 lbs.



HOTPOINT

18.2 Cubic Foot Frost-Free

- ◆ Icemaker Ready
- ◆ Full-Width Vegetable and/or Fruit Bin
- ◆ Two Covered Dairy Compartments
- ◆ Two Full-Width Fresh Food Door Shelves
- ◆ Two Freezer Door Shelves
- ◆ Adjustable Wire Everwhite Shelves
- ◆ Reversible Doors

Dimensions:

Height: 67-3/8"

Width: 28"

Depth including handle: 31-7/8"

Depth w/door open 90°: 55-3/4"

Weight:

approx. 179 lbs.

143054 White

143056 Bisque

HOTPOINT**17.9 Cubic Foot Frost-Free**

- ◆ 5.03 Cubic Foot Freezer
- ◆ Icemaker Ready
- ◆ Rolls on Wheels
- ◆ Full-Width Vegetable and/or Fruit Bin
- ◆ Two Covered Dairy Compartments
- ◆ Two Full-Width Fresh Food Door Shelves
- ◆ Two Freezer Door Shelves
- ◆ Two Easy Release Ice Trays
- ◆ Adjustable Wire Everwhite Shelves
- ◆ Reversible Doors

Dimensions

Height: 66-5/8"

Width: 29-1/2"

Depth (including handle): 32-1/8"

Depth with door open 90°: 58-1/8"

Weight: approx. 223 lbs.**143065** White w/Ice Maker**19.84 Cu. Ft.**

- ◆ 19.84 cubic foot capacity
- ◆ 6.89 cubic foot freezer
- ◆ Adjustable wire "Everwhite" shelves
- ◆ Adjustable temperature meat pan
- ◆ Sealed vegetable/fruit pan
- ◆ Equipped for optional automatic ice maker

Dimensions

Height: 67-1/2"

Width 31-1/2"

Depth: 33-9/16"

Depth with door open 90°: 47-5/8"

143080 White



19.94 Cu. Ft. w/Water & Ice

- ◆ 6.75 Cubic Foot Freezer
- ◆ Crushed Ice/Cubes/Water
- ◆ Adjustable Glass Shelves
- ◆ Adjustable Temp. Meat Pan
- ◆ Fixed Gallon Fresh Food

Dimensions

Height: 67-1/2"
Depth w/door open 90° less door
handle: 31-1/4"
Width: 31-1/2"

Weight: approx. 315 lbs.

143058 White

143059 Bisque



21.91 Cubic Foot w/Ice & Water

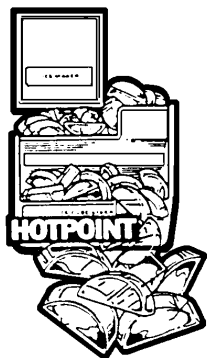
- ◆ 6.75 Cubic Foot Freezer
- ◆ Crushed Ice & Water in Door
- ◆ Adjustable Wire Everwhite Shelves
- ◆ Classic White Pans
- ◆ Fixed Gallon Fresh Food

Dimensions

Height: 67-1/2"
Depth w/door open 90°: 49-3/8"
Width: 33"

Weight: approx. 330 lbs.

143052 White



Universal Icemaker Kit

Full one-year warranty.

- 143096** IM5SS Fits all post '01 **side-by-sides** that did not already have icemaker installed.
- 143095** IM4A Fits all post '01 **top freezers**, P model year bottom freezers and post '01 bottom freezers.
- 143091** IM6 Service Icemaker Kit; Kit contains parts for any GE/Hotpoint model. Backward compatible on everything except 21-22 cu. ft. N model year bottom freezers.



Brass Drain & Icemaker Valve

Compression straight valve. 1/2" PEX x 1/4" OD

168219

Icemaker Hookup Kits



143083 25' poly tubing & 1 saddle valve



143085 16' copper pipe & 1 saddle valve

Flair-It Icemaker Valve & Tee



Use with polybutylene pipe. Due to copper valve, teflon tape recommended.

164374 Valve Only

164330 Tee Only



Genova
PRODUCTS

Icemaker Kit

166220

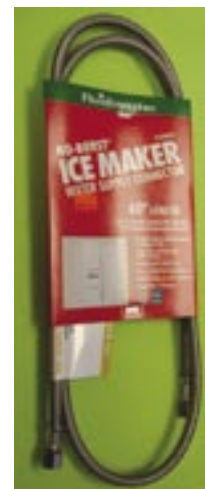
5/8" OD tee and 1/4" OD valve assembly.

Fluidmaster® No-Burst Icemaker Connector

Highest bursting strength available. Each foot contains 250 feet of stainless steel wire. Exceptional flexibility for easy installation. Won't kink or crease, even in the tightest applications.

NEW!

375009 60"



HOTPOINT**30" Electric Range w/Standard Interior**

- ◆ Standard oven interior
- ◆ Aluminum drip pans
- ◆ Stay-up Calrod® surface heating units for more even heat distribution
- ◆ Clean Sweep design lets you clean under the range without moving it; simply pull out and remove the storage drawer— no cross-braces to hinder sweeping.

Dimensions

Height: 44-5/8"
Width: 29-7/8"
Depth: 27"
(including door handle)

Weight

Approx. 144 lbs.

143062 Bisque

143074 White

141004 Bisque w/Window w/Black Glass & Clock

141006 White w/Window & Clock



Important: No
Pigtail Supplied
with Electric
Range

30" Electric Range Self-Cleaning

- ◆ Two-step self-cleaning
- ◆ 5.0 cu. ft. capacity oven
- ◆ Electronic clock and timer
- ◆ Two oven shelves
- ◆ Broiler pan with grid
- ◆ Lift-off oven door
- ◆ Interior oven light
- ◆ Infinite heat controls
- ◆ Removable, full-width storage drawer
- ◆ Porcelain enameled, up-swept cooktop
- ◆ Two 8" and two 6" plug-in Calrod® heating elements and one-piece chrome bowls
- ◆ Frameless black glass door
- ◆ Designer style handles

143063 White

**30" Electric Range Self-Cleaning Smooth Top**

All the same features as 143063-4, but with a smooth cook top. The fast, ribbon heating elements are positioned beneath the smooth cooktop and direct heat straight up to the pan. This sophisticated cooking method provides even heat for uniform cooking, and the hot surface indicator lights provide safe, confident cooking.

143047 White

143048 Black





GE Electric Range



- ◆ Clean-Well cooktop system
- ◆ Heating element "ON" indicator light
- ◆ Removable full-width storage drawer
- ◆ Four leveling legs
- ◆ Removable one-piece chrome drip bowls
- ◆ Standard clean oven
- ◆ Super large 5.0 cu. ft. capacity oven
- ◆ Lift up cooktop
- ◆ Plug-in Calrod heating elements, two 8" and two 6"
- ◆ Electronic digital clock and minute timer
- ◆ Frameless glass oven door
- ◆ Interior oven light switch
- ◆ Designer style handle

141010 White on White



30" Electric Range Self-Cleaning Smooth Top

NEW!

- ◆ Self-Clean Oven — Conveniently cleans the oven cavity without the need for scrubbing
- ◆ Super-Large Oven Capacity — Provides an impressively large oven interior for cooking more dishes and large meals at one time
- ◆ QuickSet III Oven Controls — Feature an easy to use design that lets you set precise cooking temperatures
- ◆ Ribbon Heating Elements — Provide powerful heat beneath a smooth glass surface to ensure even heat and fast warm-up times
- ◆ Ceramic Glass Cooktop — A smooth cooktop surface makes cleaning quick and easy
- ◆ ClearView™ Window — Features a convenient viewing area to check the progress of food
- ◆ Dual Element Bake — Alternates the upper broiling element and the lower baking element for even heating and optimal baking results



Weight:

Approx. Shipping
Weight: 174 lbs.

Dimensions

Height: 46-7/8"
Width: 29-7/8"
Depth: 25-3/8"

143049 White



30" Free-Standing Standard Oven with Porcelain Enamel Door

- ◆ Lift-up Cooktop
- ◆ Removable Oven Door
- ◆ Lower Separate Broiler Drawer
- ◆ Standard Pilot Ignition
- ◆ Porcelain Enameled Oven Door

Dimensions:

Height: 40"
Width: 30"
Depth: 25-5/8"

143060 Bisque
143072 White

Weight:

Approx. 190 lbs.



30" Free-Standing Standard Oven with Window & Clock

- ◆ Lift-up Cooktop
- ◆ Removable Oven Door
- ◆ Lower Separate Broiler Drawer
- ◆ Electric Ignition

141003 Bisque on Bisque
141005 White on White

141007 Shown Here

Continuous Clean Oven w/Black Glass Door & Electronic Ignition

141007 White



Both Hoods Below Feature:

- ◆ Powerful UL listed 115V motor, single speed
- ◆ 100 CFM
- ◆ Durable powder coat paint resists chipping, scratching
- ◆ Convenient front mounted fan and light controls (rocker switches)
- ◆ 8" x 8" grease filter of washable aluminum mesh
- ◆ Enclosed light illuminates cooking surface

Range Hood w/Vertical Exhaust



PR SERIES

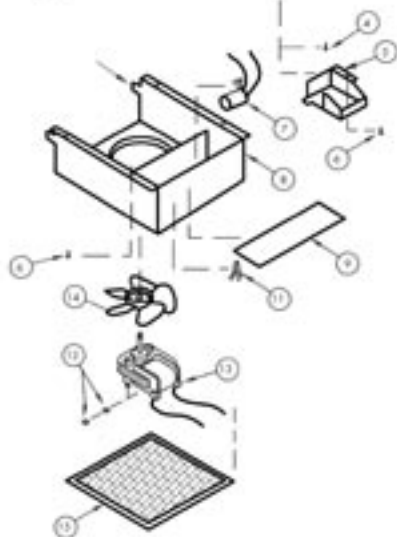
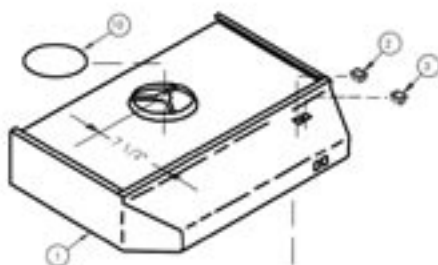
Vertical 5" round outlet.

422604 White 30"

422605 White 42"

422606 Almond 30"

422607 Almond 42"

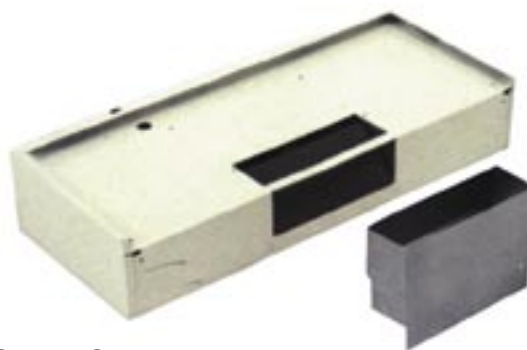


420525-6



420527-8

Combo Lighted Range Hoods Side or Roof Exhaust



PC SERIES

Combination air exhaust through sidewall or roof - outlet measures 3" x 8"

422611 30" Almond

422612 30" White

422615 42" Almond

422616 42" White

422620 Transition Piece - Converts Rectangular Outlet for Round Duct C0579-00

REPLACEMENT PARTS

422623 (#15) Grease Filter, 8" x 8" - Aluminum BCC0246-00

422630 (#9) Light Lens, 3-1/16" x 9-1/2" Flat BCC0179-00

421399 (#14) Fan Blade BCD0409-00 for PC Series

421400 (#14) Fan Blade BCD0311-10 for PR Series

420103 (#13) Replacement Motor BCD0190-00

420525 (#2) New Lamp Switch, Rocker-type, Black BL1196-00

420526 (#2) New Lamp Switch, Rocker-type, White BL1197-00

420527 (#3) New 1-Sp. Fan Switch, Rocker-type, White BL1195

420528 (#3) New 1-Sp. Fan Switch, Rocker-type, Black BL1194

OLD STYLE

420517 2-Wire Rotary Switch - BCB0164-00

420518 Replacement Knob (for 420517 Switch) BCB0306-02

420520 Switch, Rocker-type, Black BLO108-00*

420522 Switch, Rocker-type, White BLO816-00*

*Without light or fan symbol on switch



Island Range Hood



115V, single speed motor fan and light with 5" dia. vertical exhaust.
12" depth x 30" width. Rocker switches. 100 CFM

422635 White



Louvered Range Hood Vent

Louvered design, 1-3/4" inlet, white color.
3-1/3" x 10-1/2" RO.

420510



Louvered Range Hood Vent

Weatherproof w/lockable damper. Heavy plastic construction. 1-3/4" inlet. Colonial White. 3-1/3" x 10-1/2" RO. 12/Ctn.

420509



Sidewall Exhaust Fans



115V; CSA and UL listed. Sold without grille.

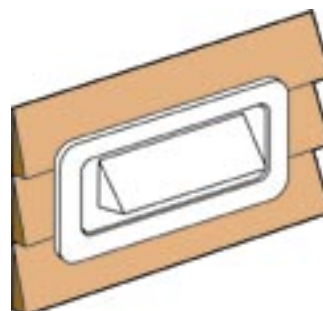
- 420710** Sidewall Fan w/White Grille
- 420711** Grille Sterling 2-3/4" - 4"
- 420709** White Grille
- 420702** Almond Grille for Old-Style Fan Where Wall Thickness is 3"

Replacement Parts

- 420703** Screws for Grille (3.5" Model)
- 421401** Fan Blade (BVA0312-00)
- 420103** 115V Motor
- 221802** Pressure Switch (V0140-03)
- 262000** Sidewall Chain



Hood Exhaust Vent for Lap Siding



Professionally finished look with lap siding. Simple to install, saves time and lowers cost. Reduces leaks. White.

420500

Prices and Specifications Subject to Change without Notice

Pans and Rings for G.E. & Hotpoint



143030 6" Pan
143031 8" Pan



143032 6" Ring
143033 8" Ring



G.E. & Hotpoint Surface Elements

Chromolox double coil hard wire 5- and 6-turn elements. Fits Hotpoint and GE models. Comes without ring.

143037 6" High-Rise
143038 8" High-Rise

Burner Elements



Authentic replacements for over 30 million supplied as OEM equipment since 1962. 3-turn coil, coil support & medallion. 250V, 1250-W. 250/Ctn.

143040 6"
143042 8"

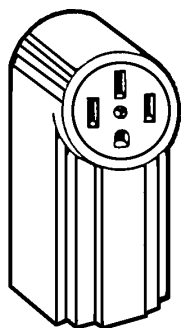
Combo Pan & Ring



This one-piece combination pan and ring is used with single coil plug-in electric range surface elements.

143044 Small; 250/Ctn.
143046 Large; 250/Ctn.

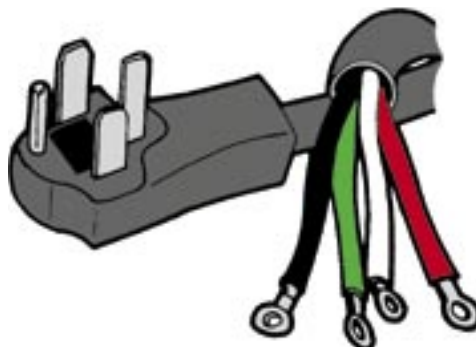
Range Receptacle



4-wire, 50-amp, 125/250-volt range receptacle with "Quick-Lok" terminals. 50/Ctn.

224201

Range Cord

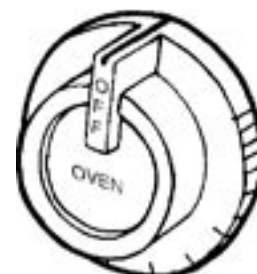


Replacement cord for all ranges having a 1-1/8" power supply entrance. Two #8 and two #6 conductors with molded cap and terminal plugs. 50 amp, 4' long. 12/Ctn.

220306

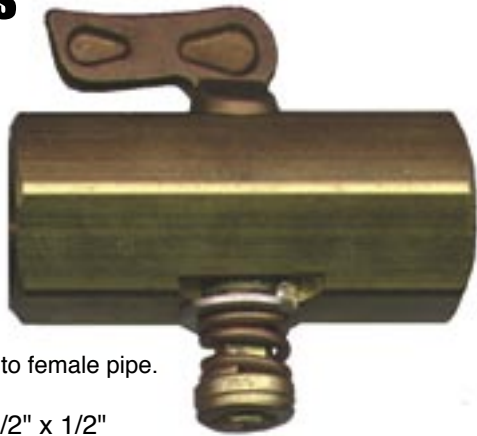
Robertshaw
UNI-LINE
NORTH AMERICA

Oven Dial for Gas T-Stat



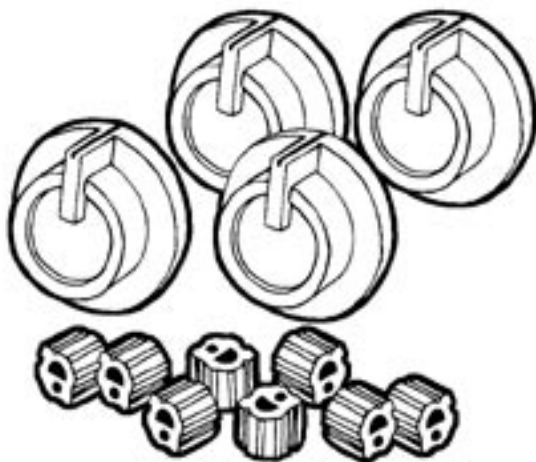
BJWA, BJ, U Series. Dials for "D" stem application. Mounts four ways. 250° to 550°F plus broil.

141508 Black



161039 1/2" x 1/2"

141506 Black; 4/Pk.



141499 Black

[illegible]

Built-In Dishwasher

- ◆ 120°F Inlet Water Capacity
- ◆ 2-Level Washing Action
- ◆ Built-in Soft Food Disposer
- ◆ Polypropylene Tub and Door Liner
- ◆ Full Ten-Year Warranty on Tub/Door
- ◆ **4 Cycles, 6 Options:** Normal, Water Saver, Rinse, Hold, Plate Warmer
- ◆ Heat Dry On/Off

143087 Black

143088 Bisque

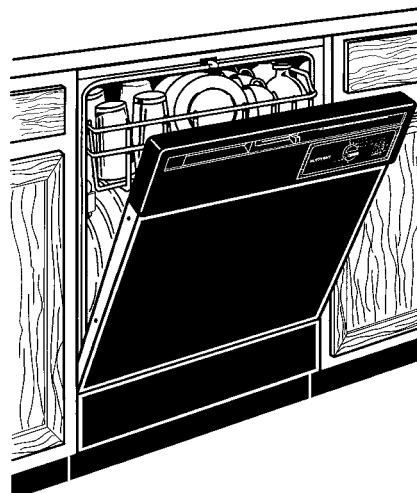
143090 White

Pots-And-Pans Built-In Dishwasher

- ◆ 120°F Inlet Water Capacity
- ◆ 2-Level Washing Action
- ◆ Built-in Soft Food Disposer
- ◆ Polypropylene Tub and Door Liner
- ◆ Reversible Door and Access Panel Inserts
- ◆ Full Ten-Year Warranty on Tub/Door
- ◆ **5 Cycles, 9 Options:** Pots & Pans Normal, Water Saver, Rinse, Hold, Plate Warmer
- ◆ Heat Dry On/Off

143089 Black

143092 White



Dimensions

Height: 35"

Width: 24"

Depth: 26-1/4"

Depth w/door open: 25"

Approx. shipping weight: 81 lbs.



Both Hotpoint & G.E. dishwashers save water by 45% - 65% over handwashing.



Dishwashers

Built-In Dishwasher

- ◆ Sure Clean™ Wash System
- ◆ 2-Level Washing Action
- ◆ **Full One-Year Warranty on Entire Dishwasher**
- ◆ **Full Ten-Year Warranty on Tub/Door Liner**
- ◆ 4 Cycles, 7 Options: Normal, Heavy/Short/Rinse Only/Hold Cycles
- ◆ Rinse Aid Dispenser
- ◆ Deluxe Lower Rack & Silverware Basket

143111 White

All GE dishwashers feature the following:

- ◆ 120°F Inlet Water Capacity
- ◆ Easy-Glide Roller System
- ◆ Convection Drying
- ◆ Horizontal Mechanism
- ◆ Perma-Tuff Interior
- ◆ Polypropylene Tub/Door Liner
- ◆ 120V/60Hz/8.6A
- ◆ Leveling Screws

Pots-And-Pans Built-In Dishwasher

All the same features as 143110 & 143111, plus:

- ◆ 5 Cycles/12 Options
- ◆ Pots-and-Pans Cycle
- ◆ Plate Warmer Cycle
- ◆ **Additional Warranty:**
Full One-Year Warranty on Entire Unit
Limited 2nd Year Water Distribution Parts Warranty
Full Ten-Year Warranty on Tub/Door Liner
- ◆ Quiet Design sound package

143112 Black

143113 White

143114 Bisque

Dishwasher Connectors

Dishwasher Drain Air Gap

The dishwasher air-gap eliminates pressure build-up and possible contamination of the home's potable water supply. Constructed of durable plastic, the "Y" shaped air-gap unit has an intake and discharge tube, between which is a trouble-free air release valve that automatically provides anti-siphon protection. 5/8" OD Inlet x 7/8" OD Outlet.



375006

Dishwasher Disposer Connector

A quick, simple way to connect dishwasher hose to sink drains and garbage disposers. Worm drive with two hose clamps.



321898 50/Ctn.

Universal Dishwasher Hookup

Genova
PRODUCTS



Universal Fittings mechanically join to any water supply tubing using a special locking ring and an elastomeric seal to make a quick, easy and watertight connection. Simply insert tubing and hand-tighten. Includes one each of the following:

- ◆ Tee 1/2" OD x 5/8" (166209)
- ◆ CPVC Connect Tube 5/8" OD x 3"
- ◆ Straight Supply Valve 1/2" ID - 5/8" OD x 1/4" ID - 3/8" OD (166224)
- ◆ Olefin Riser 3/8" OD x 1/4" ID x 60"

166227

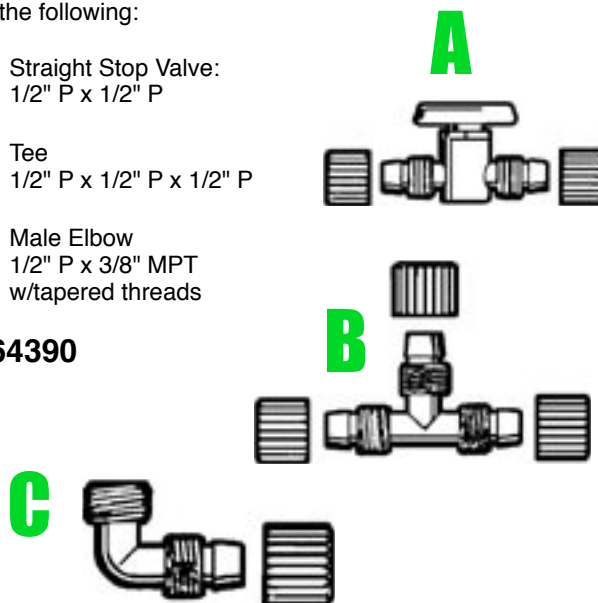
Flair-It

Dishwasher Hook-Up Kit

Contains one each of the following:

- A Straight Stop Valve: 1/2" P x 1/2" P
- B Tee 1/2" P x 1/2" P x 1/2" P
- C Male Elbow 1/2" P x 3/8" MPT w/tapered threads

164390



Fluidmaster® No-Burst Dishwasher Connections

48" of the highest bursting strength available - 250 ft. of stainless steel wire per foot; stainless ferrules are extra long with added crimps for security. Tough, non-toxic polymer core resists chlorine and chloramines. Ample inside diameter for high flow capacity. Captive cone washers seal tightly, can't fall out. Exceptional flexibility for easy install. Won't kink or crease, even in the tightest spaces. Heavy-duty brass hex nuts are easy to grip with fingers or tools and nickel plated for durability. Code approved, exceeding all plumbing code requirements. Meets IAPMO, PS 74-95, CSA, SBCCI, FDA and NSF-61. 10-year warranty.

375007

NEW!



Prices and Specifications Subject to Change without Notice

2.7 Cu. Ft. Extra-Large Capacity Washer

- ◆ 3 water levels
- ◆ Quiet-By-Design sound package
- ◆ 1 wash/spin speed combination
- ◆ Nine cycles
- ◆ 3 wash/rinse temp settings
- ◆ Auto balance suspension system
- ◆ Rotary controls
- ◆ FlexCare agitator
- ◆ Bleach dispenser

140901 White
140902 Bisque

Dimensions

Height: 42-1/2"
Width: 27"
Depth: 25"
Weight: 219 lbs.

5.7 Extra Large Capacity Dryer

- ◆ DuraDrum interior
- ◆ Automatic dry control
- ◆ 3 cycles
- ◆ 3 heat selections
- ◆ Up-front lint filter
- ◆ Quiet-By-Design sound package
- ◆ Reversible door

Dimensions

Height: 43"
Width: 27"
Depth: 25"

Electric (Weight: 136 lbs.)

141001 White

141002 Bisque

Gas (Weight: 152 lbs.)

141026 White

NOTE:

Pigtail is not included

141208 LP Change Over Kit



3.2 Cu. Ft. Super Capacity Washer

- ◆ Quiet-By-Design sound package
- ◆ SpotSpray stain treatment option
- ◆ Rotary controls
- ◆ 2 wash/spin speed combinations
- ◆ 9 cycles
- ◆ Bleach dispenser
- ◆ GentlePower agitator
- ◆ 3 water levels
- ◆ 3 wash/rinse temp settings

Special Order

6 Cu. Ft. Extra-Large Capacity Dryer

- ◆ DuraDrum interior
- ◆ 4 heat selections
- ◆ 3 cycles
- ◆ Quiet-By-Design sound package
- ◆ Reversible door
- ◆ Automatic dry control
- ◆ Up-front lint filter

Special Order



3.2 Cu. Ft. Super Capacity Plus Washer

- ◆ Auto balance suspension system
- ◆ Rotary controls
- ◆ 4 wash/spin speed combinations
- ◆ 17 cycles
- ◆ Bleach and fabric softener dispenser
- ◆ 4 water levels
- ◆ 3 wash/rinse temp settings
- ◆ GentlePower agitator
- ◆ Spin only option

141030 White
141031 Bisque



6 Cu. Ft. Extra-Large Capacity Dryer

- ◆ Automatic dry control
- ◆ DuraDrum interior
- ◆ 4 heat selections
- ◆ 6 cycles
- ◆ Quiet-By-Design sound package
- ◆ Fixed end of cycle signal
- ◆ Reversible door
- ◆ Up-front lint filter

Electric

141033 Bisque/Bisque
141034 White/White

Gas

141028 White/White
141029 Bisque/Bisque



Drain Hose for G.E.

58" L. Fits GE extra-large capacity washers 141030 and 141031.

440055



Washing Machine Hose

High pressure hose with female ends. 5' long. 12/Ctn.

440050



4-Wire Dryer Cable



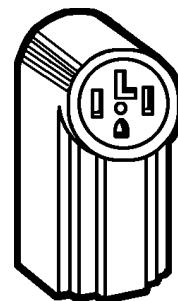
Round rubber jacketed wire, molded-on plug. Black, 4-wire for mobile homes. 4', 30 AMP. 12/Ctn.

220307

Dryer Receptacle

4-wire, 30-AMP, 125/250-volt dryer receptacle with "Quick-Lok" terminals. 50/Ctn.

224301





Vent w/ Tailpiece



Energy efficient louver vent hood automatically opens and closes with dryer operation. Complete with hood (white), aluminum tailpiece, flange and plastic clamp.

141206

Flexible Vent Hose



All 4" diameter.

White Vinyl

141202 5', Bag; 12/Ctn.

141205 50', Boxed

Aluminum Foil

141200 5' Flex., Bulk

141197 15' Flex., Bulk

141199 25' Flex., Bulk

141195 8' - U.L. Appr.

141196 5' - U.L. Appr.

Wide Mouth Vent Hood



Wide mouth vent hood with white finish. 4". 25/Ctn.

141203

Clamps



4" plastic adjustable clamps. 2 per polybag.

141198 24/Ctn.

Outlet Box



Universal for right- or left-hand drain. Rust-proof, beige. Holes 3" apart. OS: 11-3/4" W x 10" H x 2-1/2" D. Cutout: 9-1/8" W x 7-1/4" H x 2-1/2" D.

440206

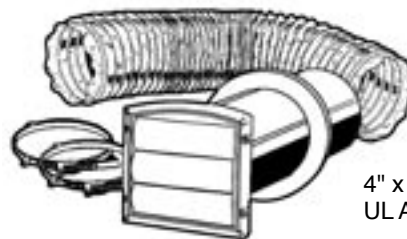
Venting Kit w/Duct

4" louvered vent in white finish, aluminum tailpiece, 5-foot vinyl duct, 2 clamps. Boxed. 6/Ctn.

141201

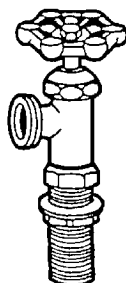


Transitional Vent Kit



4" x 8".
UL Approved.

141204



Washing Machine Valve

One-piece. brass body. Tailpiece: 2.5". Combination .5 solder or threaded connection with locknut. 1/2"; 6/Ctn.

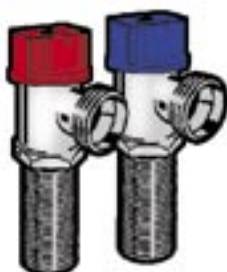
379915



Washing Machine Valve

Flair-It

164404 1/2" ID



Half Turn Valves

Long shank MIP valve with easy on/off control and color-coded handles. Forged brass construction eliminates porosity problems of traditional cast valves. UPC & CSA listed.

376905 Blue

376906 Red

SONY

Under Cabinet Flip-Down LCD TVs

Perfect for the modern kitchen, these multi-function appliances add value and convenience without taking up precious countertop space. These items make great giveaways and promotional items to boost home sales!

LCD 7" TV/CD/Clock Radio

NEW!

- ◆ Super-Slim Under-the-Cabinet LCD TV
- ◆ 7" Wide Screen LCD Color Panel Display
- ◆ TV/Cable Tuner (w/Auto Channel Search)
 - VHF/UHF: Channel 2-69
 - Cable (STD, HRC or IRC): 125 Channels
- ◆ TV Stereo/Auto SAP Function
- ◆ Mega Expand/Mega Bass Sound System
- ◆ 15 Station Presets (5 AM/10 FM)
- ◆ Cooking Timer
- ◆ Magnetic Remote Commander Remote Control
- ◆ Front Loading CD Tray
- ◆ CD-R/RW Playback
- ◆ Aluminum Panel Accents


144001

LCD 9" TV/DVD/CD/Clock Radio

NEW!

- ◆ DVD/CD Playback
- ◆ 9" Wide Screen LCD Color Panel Display
- ◆ TV/Cable Tuner (w/Auto Channel Search)
 - VHF/UHF: Channel 2-69
 - Cable (STD, HRC or IRC): 125 Channels
- ◆ TV Stereo/Auto SAP Function
- ◆ Mega Expand/Mega Bass Sound System
- ◆ 15 Station Presets (5 AM/10 FM)
- ◆ Cooking Timer
- ◆ Full Function Remote Control
- ◆ Front Loading CD Tray
- ◆ High End Stainless Steel Panel


144002